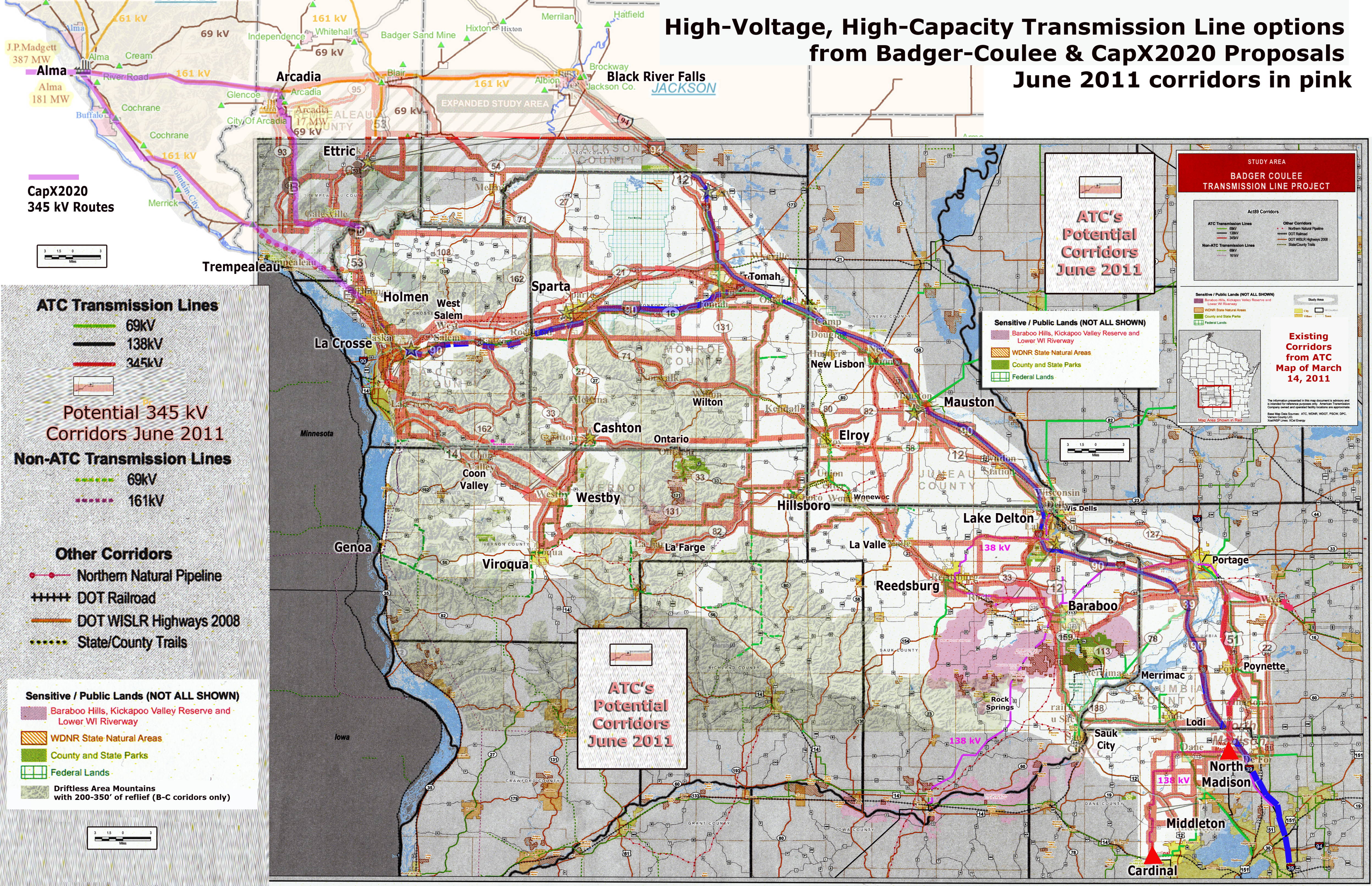
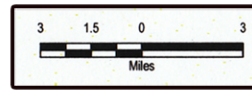


# High-Voltage, High-Capacity Transmission Line options from Badger-Coulee & CapX2020 Proposals

## June 2011 corridors in pink



CapX2020  
345 kV Routes



**ATC Transmission Lines**

- 69kV
- 138kV
- 345kV

**Potential 345 kV Corridors June 2011**

**Non-ATC Transmission Lines**

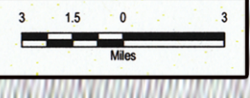
- - - - 69kV
- - - - 161kV

**Other Corridors**

- Northern Natural Pipeline
- + + + + DOT Railroad
- DOT WISLR Highways 2008
- - - - State/County Trails

**Sensitive / Public Lands (NOT ALL SHOWN)**

- Baraboo Hills, Kickapoo Valley Reserve and Lower WI Riverway
- WDNR State Natural Areas
- County and State Parks
- Federal Lands
- Driftless Area Mountains with 200-350' of relief (B-C corridors only)



**STUDY AREA**  
**BADGER COULEE TRANSMISSION LINE PROJECT**

**ATC's Potential Corridors June 2011**

**Act89 Corridors**

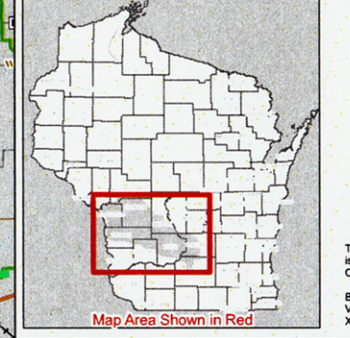
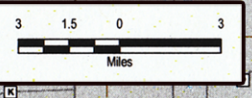
- ATC Transmission Lines
  - 69kV
  - 138kV
  - 345kV
- - - - Non-ATC Transmission Lines
  - - - - 69kV
  - - - - 161kV
- Other Corridors
  - Northern Natural Pipeline
  - + + + + DOT Railroad
  - DOT WISLR Highways 2008
  - - - - State/County Trails

**Sensitive / Public Lands (NOT ALL SHOWN)**

- Baraboo Hills, Kickapoo Valley Reserve and Lower WI Riverway
- WDNR State Natural Areas
- County and State Parks
- Federal Lands

**Existing Corridors from ATC Map of March 14, 2011**

**ATC's Potential Corridors June 2011**



The information presented in this map document is advisory and is intended for reference purposes only. American Transmission Company owned and operated facility locations are approximate. Base Map Data Sources: ATC, WDNR, WOOT, PSCW, DPC, Vernon County LID, Johnson Lines, ICAI Energy